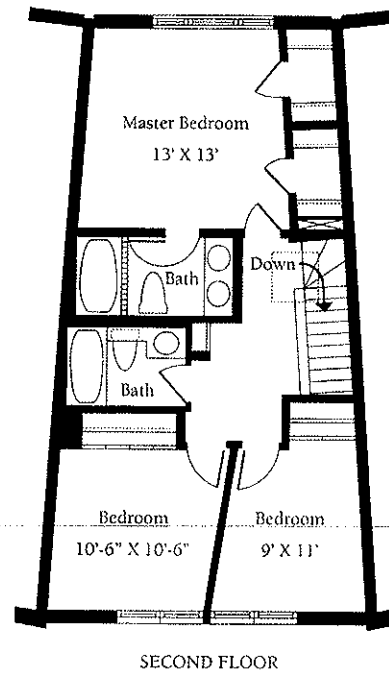
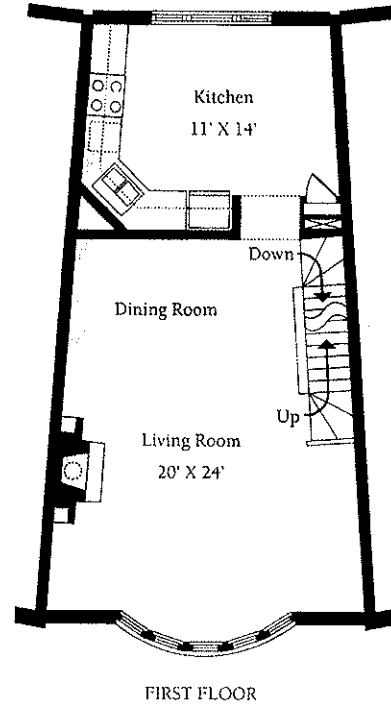
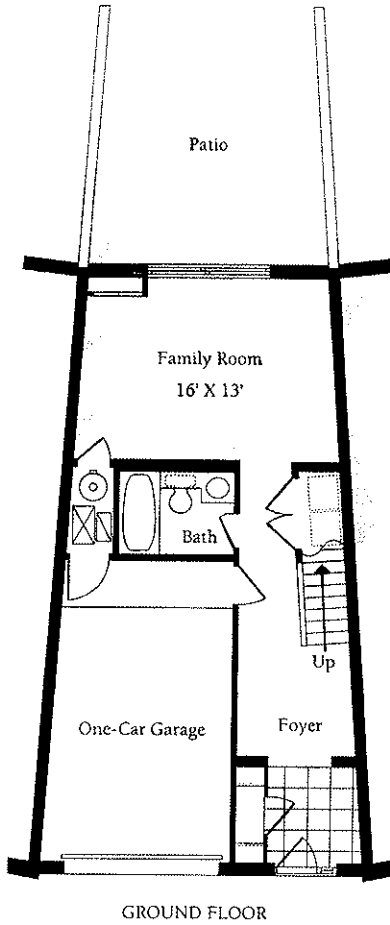


# CRESCENT TOWNHOMES

PLAN I (with bay window)

PLAN II (with Juliet balcony)



- 2,155 square feet
- Spacious living room with fireplace
- Granite entry foyer
- European-style kitchen with laminate cabinets and Whirlpool appliances
- Private outdoor patio
- Naturally finished oak flooring (first level)
- One-car attached garage
- Skylight

*Jamerlane*

2707 NORTH GREENVIEW

Exclusive Sales Agent

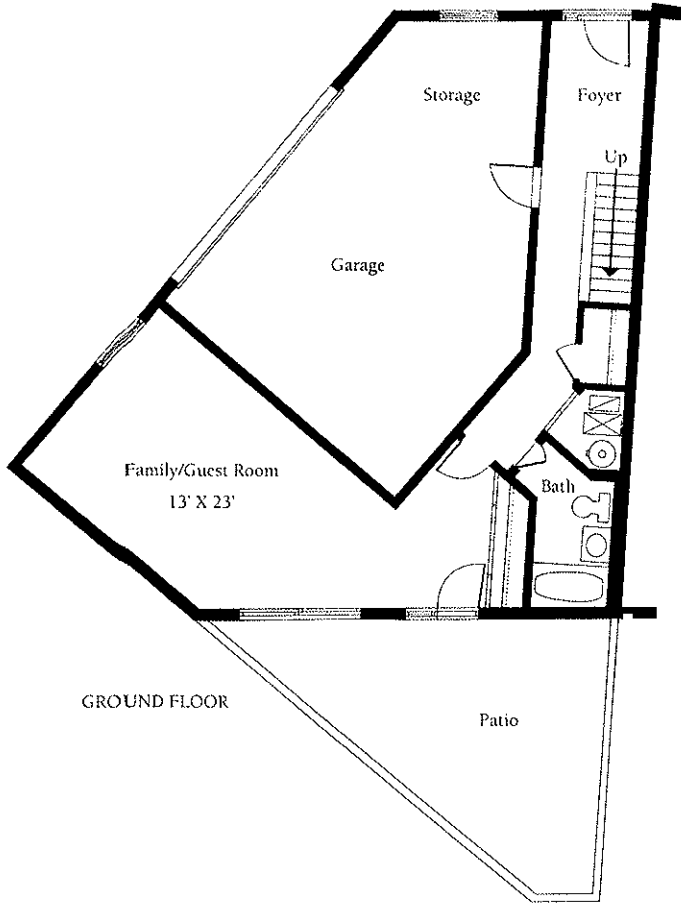


Jameson Realty Group 312.751.0300

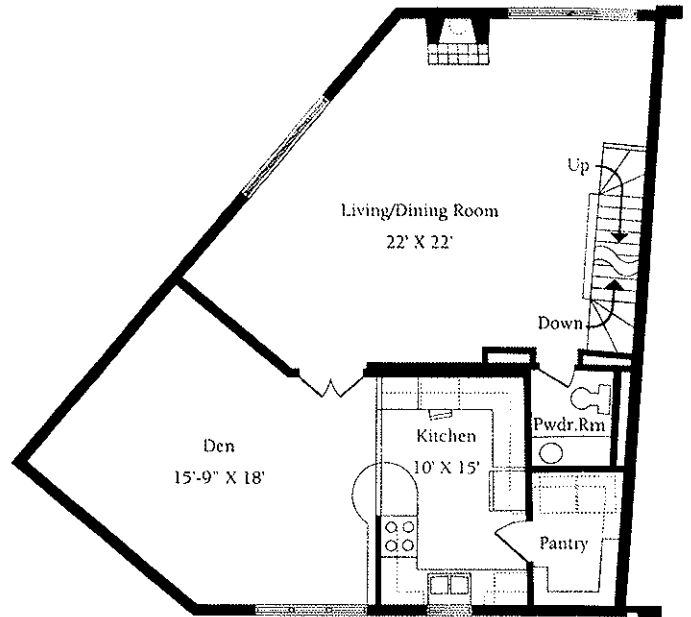
Note: All dimensions are approximate. All plans and specifications are subject to change and revision

# CRESCENT TOWNHOMES

P L A N I I I

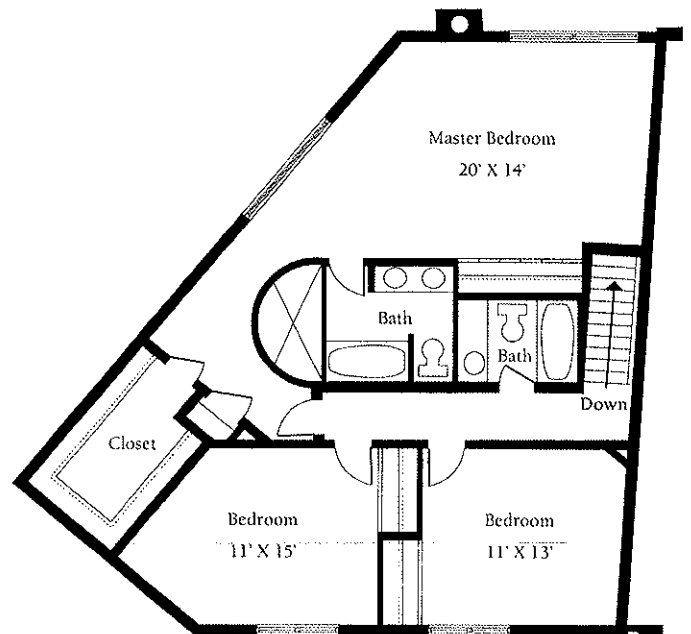


GROUND FLOOR



FIRST FLOOR

- 3,375 square feet
- Spacious living room with fireplace
- Granite entry foyer
- European-style kitchen with laminate cabinets and Whirlpool appliances
- Private outdoor patio
- Naturally finished oak flooring (first level)
- Attached garage



SECOND FLOOR

*Jamerlane*

2707 NORTH GREENVIEW

Exclusive Sales Agent

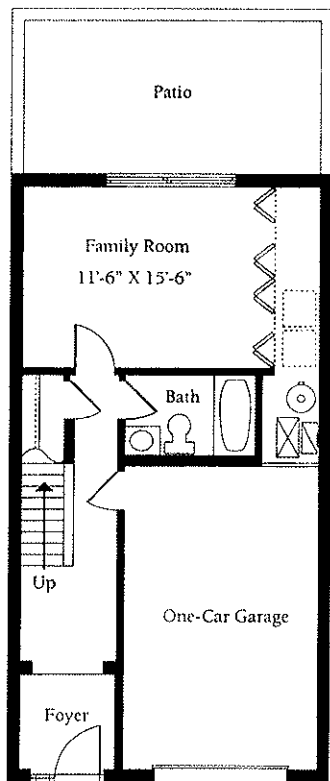


Jameson Realty Group 312.751.0300

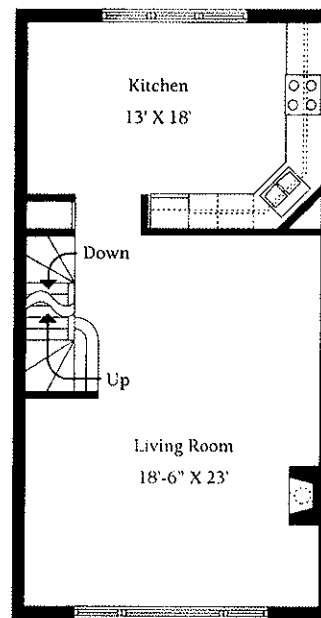
Note: All dimensions are approximate. All plans and specifications are subject to change and revision

# CRESCENT TOWNHOMES

P L A N I V

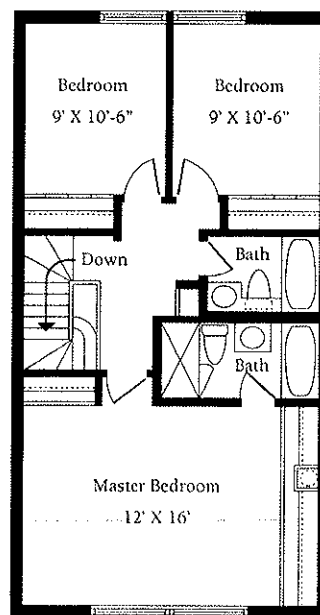


GROUND FLOOR



FIRST FLOOR

- 2,180 square feet
- Spacious living room with fireplace
- Granite entry foyer
- European-style kitchen with laminate cabinets and Whirlpool appliances
- Private outdoor patio
- Naturally finished oak flooring (first level)
- One-car attached garage



SECOND FLOOR

*Jamerlane*

2707 NORTH GREENVIEW

Exclusive Sales Agent

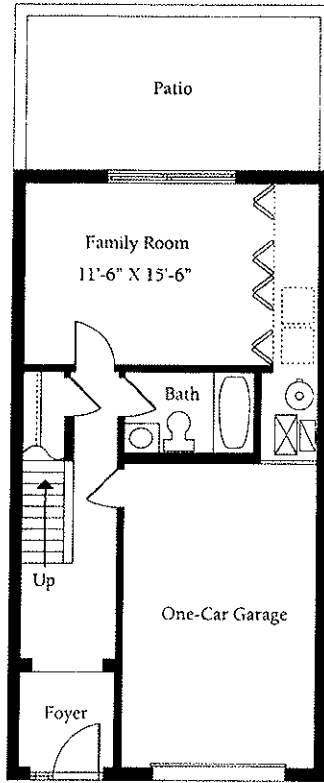


Jameson Realty Group 312.751.0300

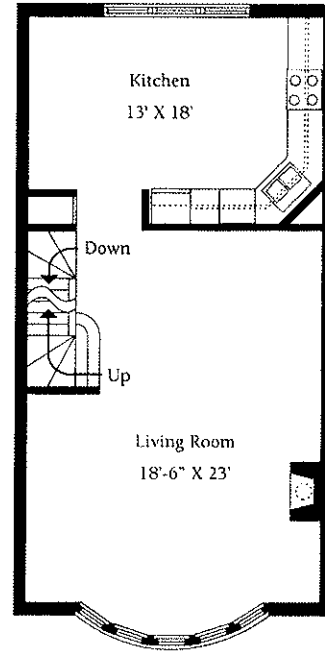
Note: All dimensions are approximate. All plans and specifications are subject to change and revision

# CRESCENT TOWNHOMES

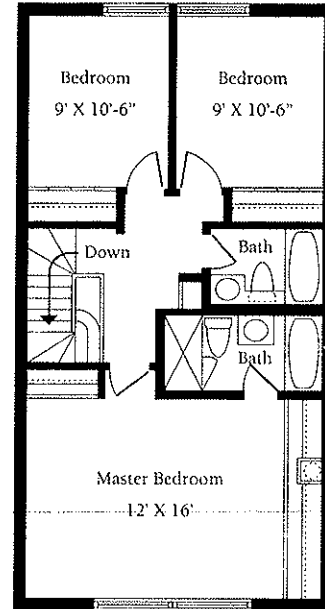
P L A N V



GROUND FLOOR



FIRST FLOOR



SECOND FLOOR

- 2,180 square feet
- Spacious living room with fireplace
- Granite entry foyer
- European-style kitchen with laminate cabinets and Whirlpool appliances
- Private outdoor patio
- Naturally finished oak flooring (first level)
- One-car attached garage

*Jamerlane*

2707 NORTH GREENVIEW

Exclusive Sales Agent



Jameson Realty Group 312.751.0300

Note: All dimensions are approximate. All plans and specifications are subject to change and revision

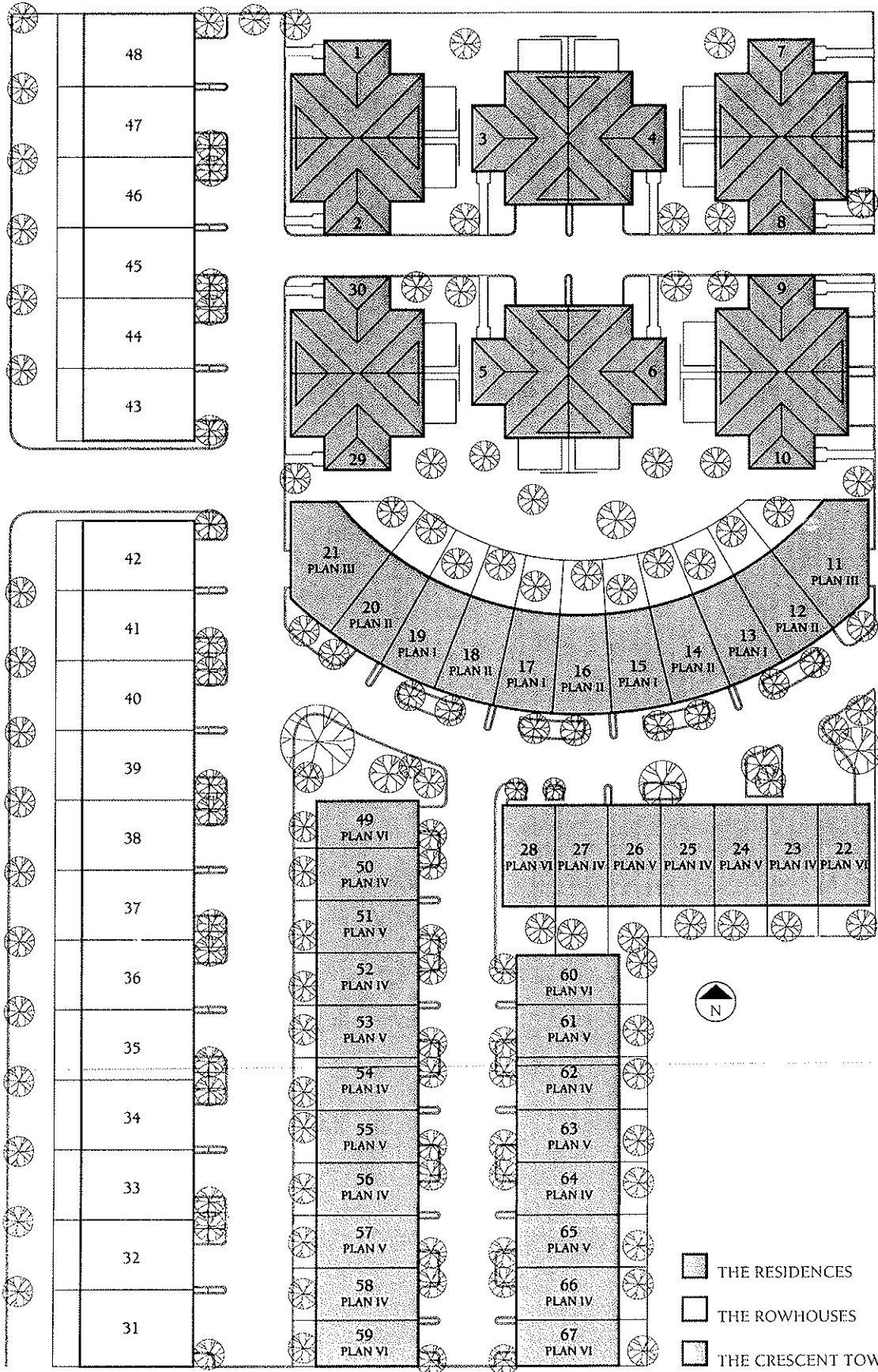
# Tamertlane

27 07 NORTH GREENVIEW

## SITE PLAN

NORTH GREENVIEW AVENUE

JANSSEN STREET



## GENERAL FEATURES

- Park-like elegant landscaping with lighting, designed by award winning landscape architect.
- Two car garage. Automatic door opener and two remote control units.
- Energy efficient Majestic "Warm Magic" fireplace.
- Solid core doors throughout furnished with "Baldwin" lever handle latchsets.
- Halo recessed incandescent fixtures and light track.
- Separate laundry area with utility tub.
- Pella metalclad, prefinished double glazed windows and sliding glass doors.
- Pre-wired for cable TV and telephone.
- Smoke detectors.
- Security system with emergency alert to police and fire departments.
- Light switches located at convenient 36" height.
- Acoustically conditioned masonry common wall.
- Maintenance-free copper flashing, gutters and downspouts.
- R-11 insulation factor in exterior walls.
- R-30 insulation factor in roof.

## DELUXE AMENITIES – RESIDENCE

The following amenities are included in the purchase price:

### HEATING & AIR CONDITIONING

- Total year-round comfort is achieved through two, zoned Carrier heating and cooling systems and two humidifiers. Furnaces are gas fired and high efficiency.

### GOURMET KITCHEN

- Elegant lacquer wood cabinetry.
- Granite counter tops.
- Naturally-finished oak flooring.
- Two compartment stainless steel sinks.
- "Viking" commercial quality stove with 6 burners.
- Appliance package including electric oven/microwave unit, dishwasher, disposal and black glass double door refrigerator, all manufactured by Whirlpool.

### BATHROOMS

- Master bathroom features an oversize bathtub, a separate lighted marble shower stall, marble floor, marble countertop with double vitreous china bowls.
- All other bathrooms with ceramic tile floors and shower and/or tub area.
- Custom-designed laminate vanity cabinets with marble tops and vitreous china bowls.
- Kohler plumbing fixtures and Kohler Finesse faucets in coordinated style.
- Electrical safety circuit breaker outlets in all bathrooms.

### FLOOR & CEILINGS

- Marble entry floor.
- Oak strip flooring on entire living room level.
- Designer tile in laundry room.
- Custom profile moldings and trim.

## DELUXE AMENITIES – ROWHOUSE

The following amenities are included in the purchase price:

### HEATING & AIR CONDITIONING

- Total year-round comfort is achieved through zoned Carrier heating and cooling systems and humidifier. Furnace is gas fired and high efficiency.

### GOURMET KITCHEN

- European style laminate cabinets.
- Granite countertops.
- Naturally-finished oak flooring.
- Two compartment stainless steel sinks.
- Appliance package including drop-in gas range along with electric oven/microwave unit, dishwasher, disposal and double door refrigerator, all manufactured by Whirlpool.

### BATHROOMS

- Master bathroom features an oversize bathtub, a separate lighted ceramic tile shower stall, marble floor, marble countertop with double vitreous china bowls.
- All other bathrooms with ceramic tile floors and shower.
- Custom-designed laminate vanity cabinets with laminate top and vitreous china bowls.
- Kohler plumbing fixtures and Kohler Finesse faucets in coordinated style.
- Electrical safety circuit breaker outlets in all bathrooms.

### FLOOR & CEILINGS

- Marble entry floor.
- Oak strip flooring on entire living room level.
- Designer tile in laundry room.

NOTE: Tamerlane's policy of continual attention to design and construction requires that specifications, equipment and dimensions be subject to change without notice.

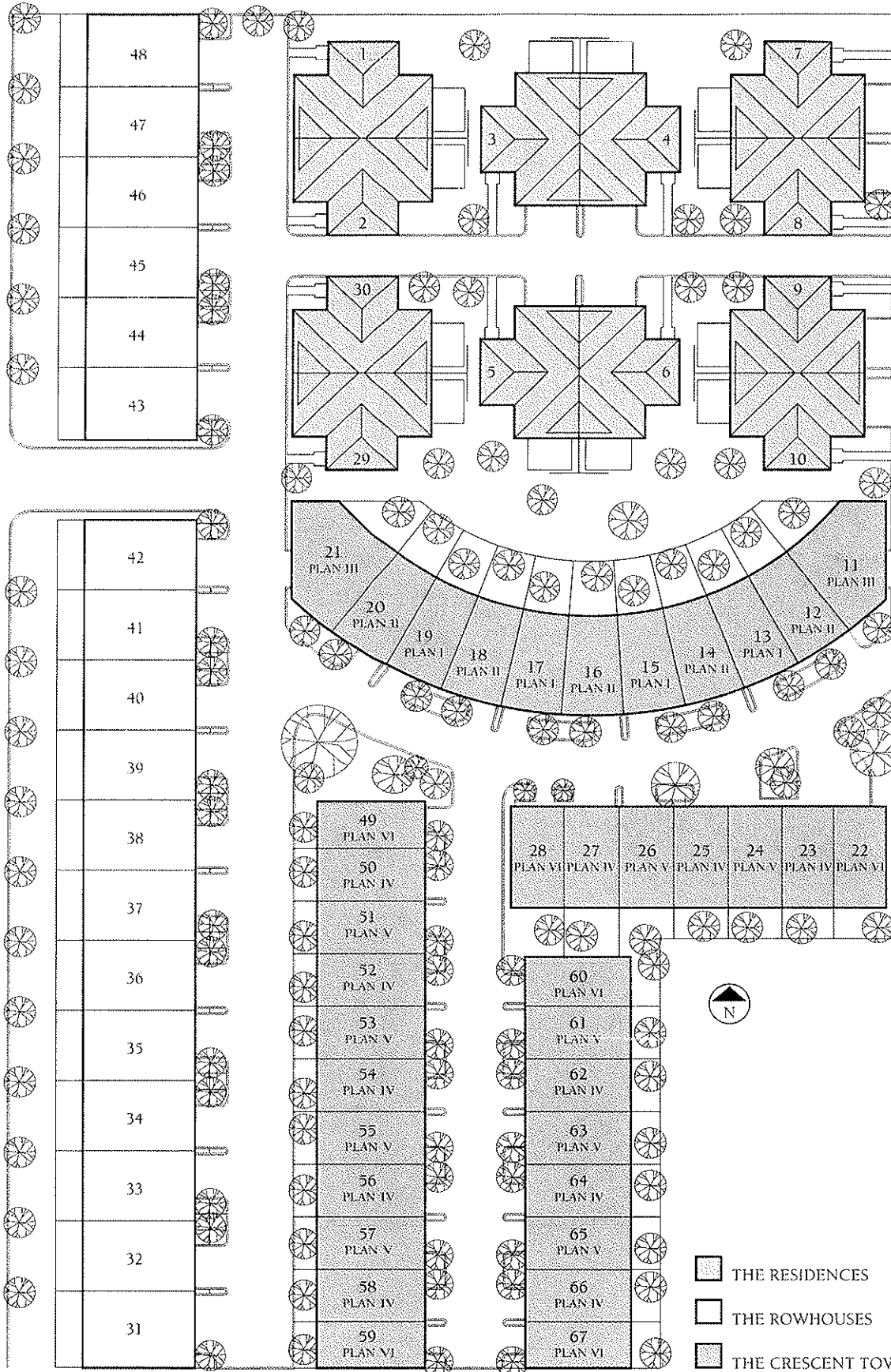
# Jamerlane

2707 NORTH GREENVIEW

## S I T E P L A N

NORTH GREENVIEW AVENUE

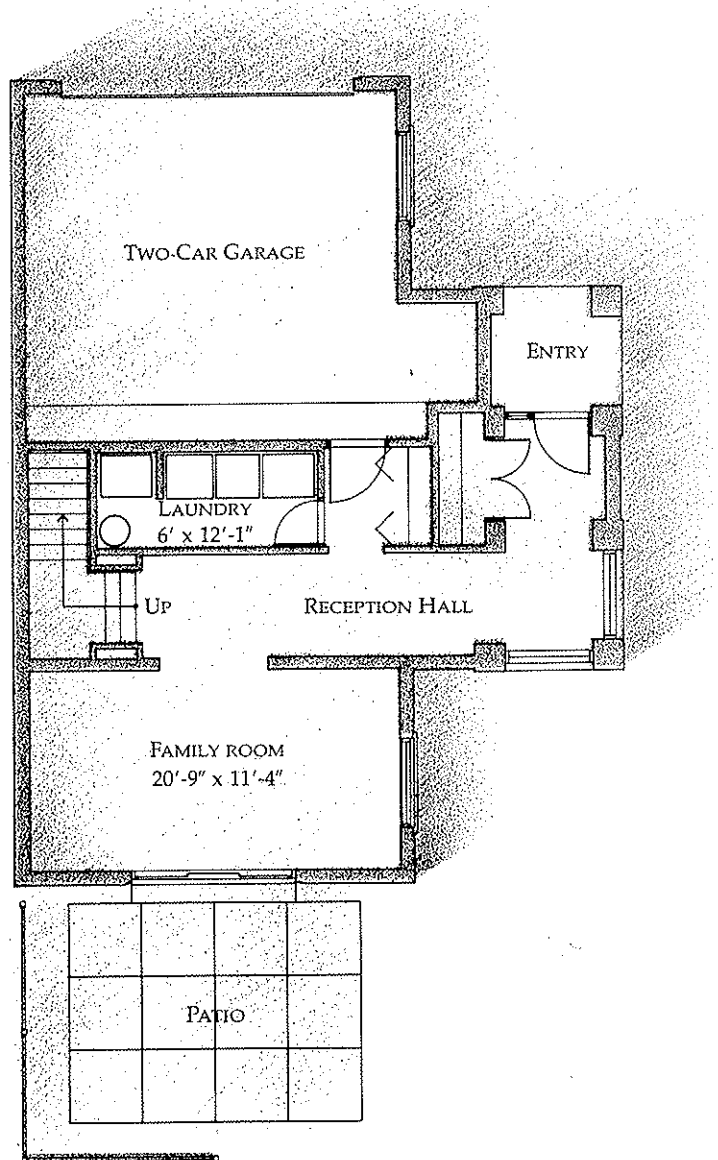
JANSSSEN STREET



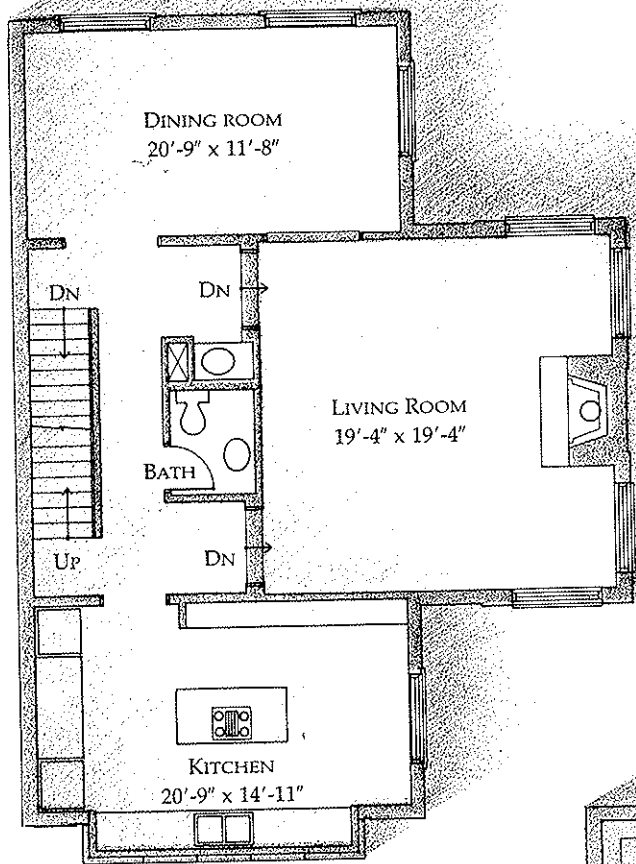
# FEE-SIMPLE RESIDENCE



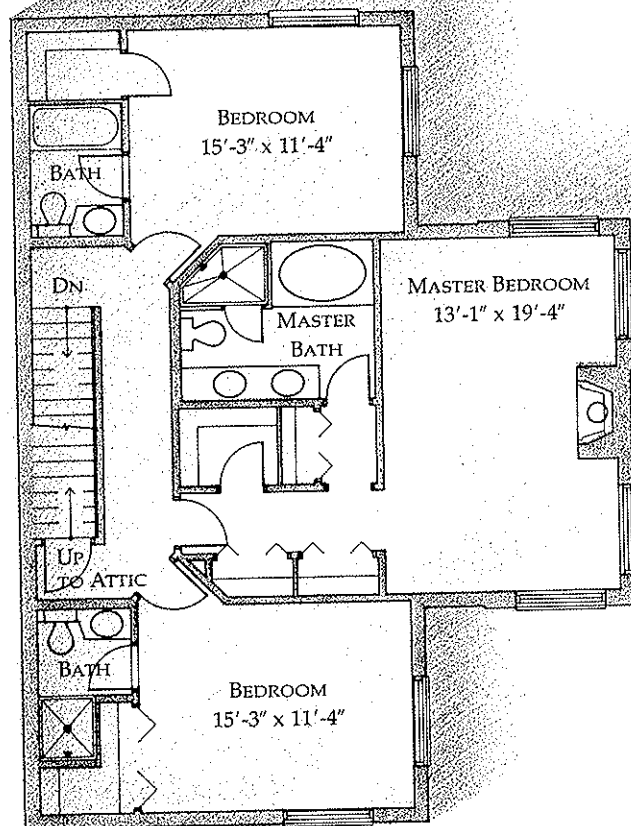
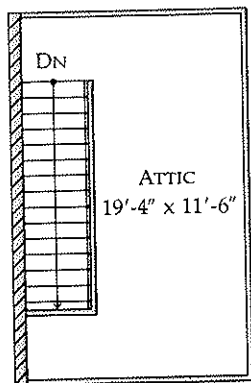
- FORMAL ENTRY HALL
- SUNKEN SPACIOUS LIVING ROOM WITH FIREPLACE AND FOUR 10' HIGH ARCHED WINDOWS
- SEPARATE, FORMAL DINING ROOM
- GOURMET KITCHEN WITH EXPANSIVE BAY WINDOW AND ISLAND WORK AREA
- HIGHLY FINISHED WOOD CABINETRY WITH GRANITE COUNTERS
- LUXURIOUS MASTER BEDROOM SUITE WITH FIREPLACE AND VAULTED CEILING
- OPTION TO CONVERT FAMILY ROOM TO MAID'S QUARTERS WITH FULL BATHROOM
- FINISHED-IN-PLACE STRIP OAK FLOORING ON ENTIRE LIVING ROOM LEVEL
- DRYWALLED ATTIC STORAGE FOR LUGGAGE, OUT OF SEASON CLOTHING
- TWO-CAR HEATED GARAGE



GROUND FLOOR



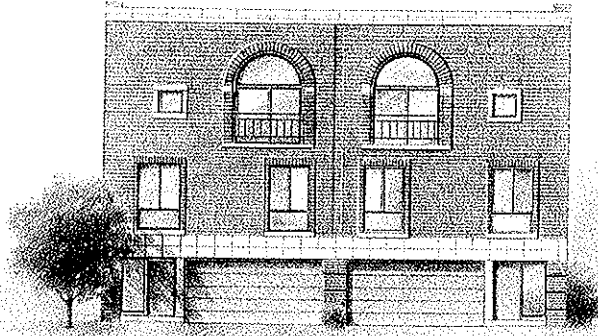
FIRST FLOOR



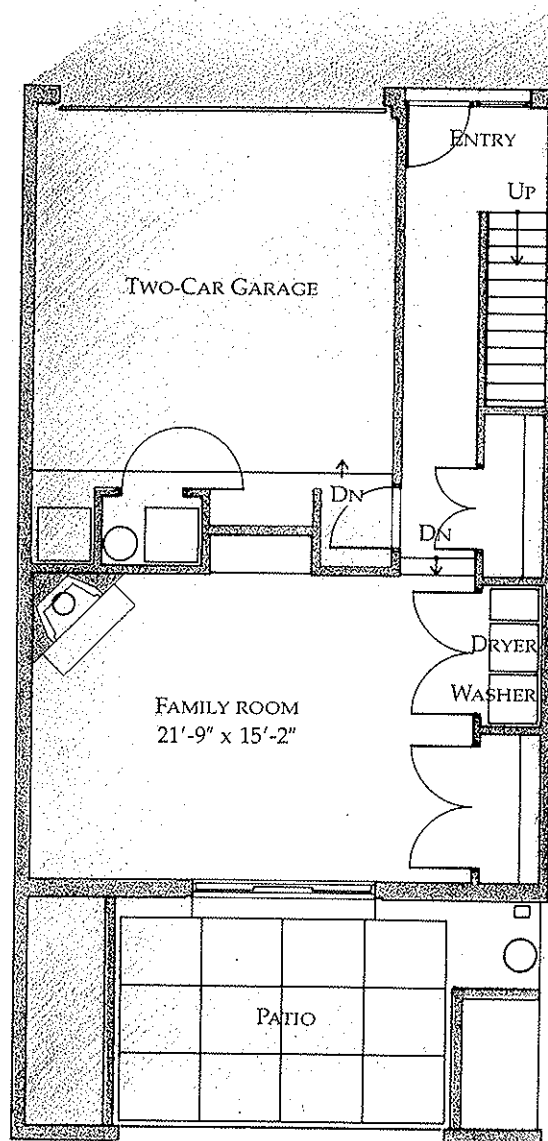
SECOND FLOOR

NOTE:  
ALL DIMENSIONS ARE APPROXIMATE. PLANS ARE NOT TO SCALE. ALL PLANS AND SPECIFICATIONS ARE SUBJECT TO CHANGE AND REVISION.

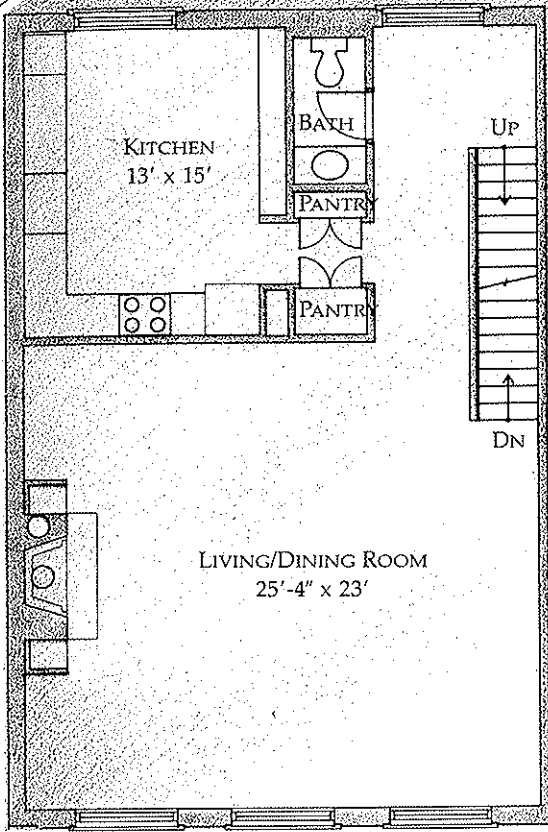
# TOWN HOME



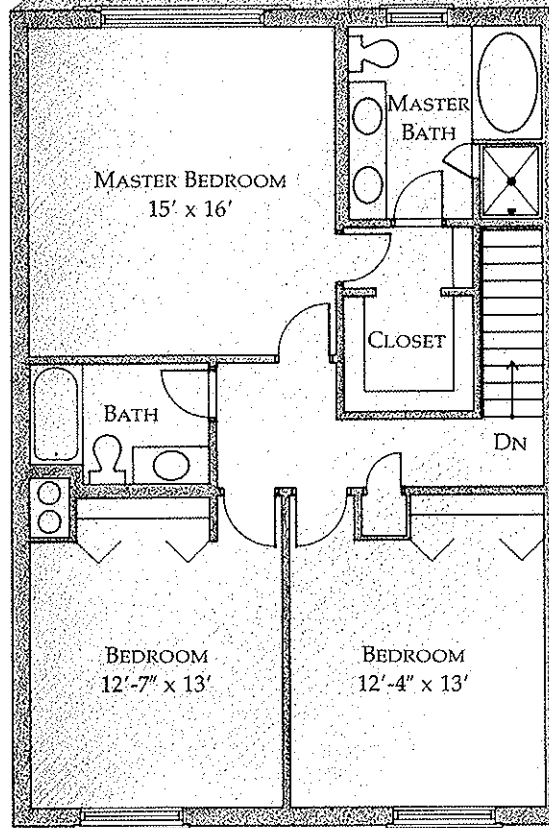
- PRIVATE OUTDOOR PATIO
- L-SHAPED EUROPEAN-STYLE KITCHEN WITH LARGE EAT-IN AREA AND PANTRY
- SPACIOUS LIVING ROOM WITH FIREPLACE AND OVERSIZE TRIPLE WINDOWS
- WOOD FLOORS WITH CONTEMPORARY TRIM
- MASTER SUITE WITH SEPARATE SHOWER AND WALK-IN CLOSET
- TWO-CAR GARAGE
- FAMILY ROOM FIREPLACE (OPTIONAL)



GROUND FLOOR



FIRST FLOOR



SECOND FLOOR

NOTE:  
 ALL DIMENSIONS ARE APPROXIMATE. PLANS ARE NOT TO  
 SCALE. ALL PLANS AND SPECIFICATIONS ARE SUBJECT TO  
 CHANGE AND REVISION.